

COME TO THE SOURCE

**POLYCHEM**<sup>®</sup>  
CORPORATION

# GP-44S

**AUTOMATIC SIDE SEAL ARCH MACHINE**



*The GP-44S Automatic Side Seal Arch Machine. Designed and developed for most general purpose industrial strapping applications where side sealing is preferred. Adaptable to all popular arch sizes and strap sizes by simple kits. The GP-44S offers the highest quality, reliability, simplicity and safety.*

***The Best Choice... The Only Choice***

# GP-44S AUTOMATIC SIDE SEAL ARCH MACHINE



## FEATURES

- The same reliable GP-44 strapping head in a side seal configuration. The side mounting prevents debris from contaminating the seal head.

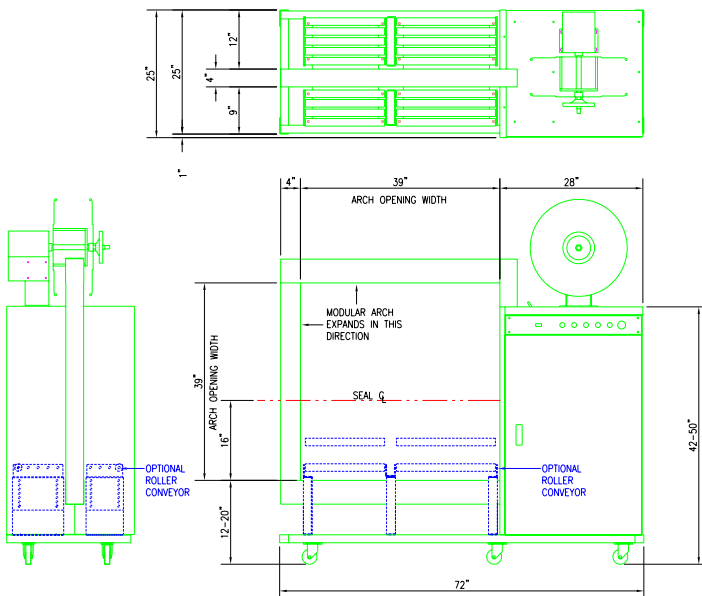
## SPECIFICATIONS

- Capable of 44 straps per minute
- Programmable controller with diagnostics
- Outside reel with automatic, strap loading
- Electric, no-adjust reel brake
- Reversible control box to facilitate operation from either side of machine
- Complete safety interlocks on doors
- Operates on 110AC Power
- Long life heater blade with smoke exhaust system
- Power savings system. Motors run only during strap cycle
- External, fully adjustable tension knob
- Seven digit, non-resettable maintenance counter
- Automatic re-feed mechanism
- 8" x 8" or 9" x 8" core sizes
- 8" minimum package height (incompressible)

### Options:

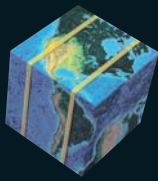
- Roller Conveyor
- Zinc Dichromate corrosion-resistant plating

**\*NOTE:** Strapping cycle time varies with arch size and package size



6277 HEISLEY ROAD  
MENTOR, OHIO 44060  
(440) 357-1500  
FAX (440) 352-9553  
1-800-548-9557

WEST COAST DISTRIBUTION CENTER  
12332 BELL RANCH DRIVE  
SANTA FE SPRINGS, CA 90670  
(562) 903-4576  
FAX (562) 903-4579  
1-800-899-0822



COME TO THE SOURCE

**POLYCHEM**<sup>®</sup>  
CORPORATION

**GP-44SZn**  
**AUTOMATIC ZINC DICHROMATE**  
**SIDE SEAL ARCH MACHINE**  
*Designed for the Food Packaging Industry*



*The GP-44SZn Automatic Zinc Dichromate Arch Machine. Designed and developed specifically for the food packaging industry. Adaptable to all popular arch sizes and strap sizes by simple kits. The GP-44SZn offers the highest quality, reliability, simplicity and safety.*

***The Best Choice... The Only Choice***

# GP-44SZn AUTOMATIC ZINC DICHROMATE SIDE SEAL ARCH MACHINE



## FEATURES

- Designed and developed for food packaging industry strapping applications. The entire machine frame and covers are Zinc Dichromate plated for corrosion resistance. In addition, critical components such as the feed/retract wheel, high tension arms and accumulator within the seal engine are constructed with stainless steel or Zinc Dichromate coated steel to prolong the serviceable life of the machine. The bottom of the machine has been enclosed to provide splash protection from room wash down requirements.

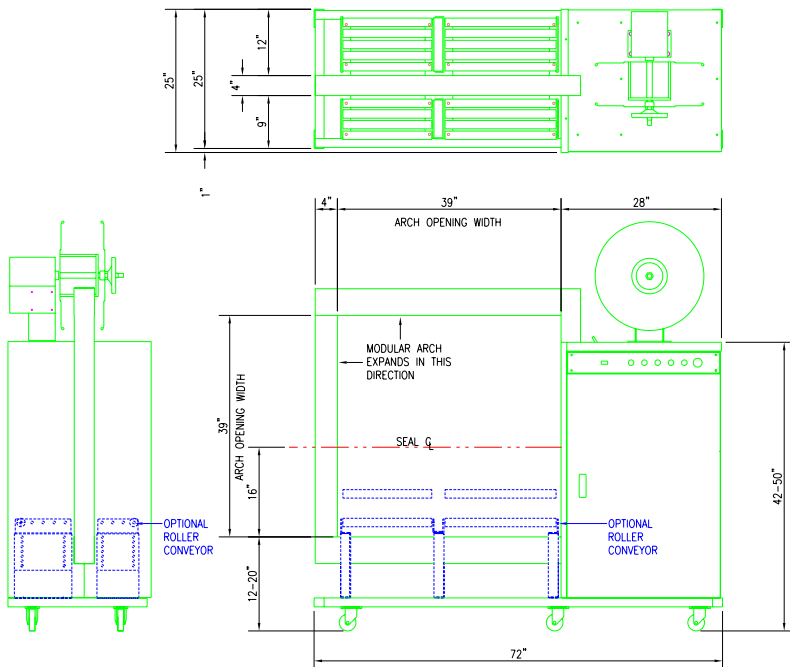
## SPECIFICATIONS

- Capable of 44 straps per minute
- Programmable controlled with diagnostics
- Outside reel with automatic, strap loading
- Electric, no-adjust reel brake
- Reversible control box to facilitate operation from either side of machine
- Complete safety interlocks on doors
- Operates on 110AC Power
- Long life heater blade with smoke exhaust system
- Power savings system. Motors run only during strap cycle
- External, fully adjustable tension knob
- Seven digit, non-resettable maintenance counter
- Automatic re-feed mechanism
- 8" x 8" or 9" x 8" core sizes
- 8" minimum package height (incompressible)

### Options:

- Roller Conveyor

**\*NOTE:** Strapping cycle time varies with arch size and package size



6277 HEISLEY ROAD  
MENTOR, OHIO 44060  
(440) 357-1500  
FAX (440) 352-9553  
1-800-548-9557

WEST COAST DISTRIBUTION CENTER  
12332 BELL RANCH DRIVE  
SANTA FE SPRINGS, CA 90670  
(562) 903-4576  
FAX (562) 903-4579  
1-800-899-0822